

The

CHESS COLLECTOR

VOL XV No 2. 2006

CCI CONGRESS, BERLIN EDITION



CONTENTS

Your Move	Members Page	3
Review of the CCI Berlin Congress	Jim Joannou	4
Chess in Art in Berlin	Hans Hollander	6
Chess around the Artic Circle.	Wolfgang L. Angerstein	7
Minutes from the Business Meeting	Hope W. Levene	9
Images from the Berlin Congress		10
News in Brief		12
Some political-social situations in Mongolian Chess sets	Rodolfo Pozzi	13
The Chess set of Giovanna Bolognini	Milly Pozzi	14
Obituary of Jean-Claude Cholet	Rodolfo Pozzi	15
Other talks from Berlin	Various	16
An Oblique View of Chess	Hartmuth Hoppe	17
Auction Review	Gareth Williams	18
CCI Diary		19
Advertisement		20

ADVERTISING RATES

A4 full page	£110	\$160	€80
A4 half page	£55	\$80	€40
A4 quarter page	£25	\$40	€15
Per line (12 words)	£3	\$5	€

The C.C.I. Board and the Editor of *The Chess Collector* do not necessarily endorse any product or service mentioned herein, nor is any responsibility accepted for any inaccuracy herein or for any matter arising there from.

EDITOR: Jim Joannou. 11 Furness Road, Morden, Surrey, SM4 6PS. UK

DISTRIBUTION:

EUROPE: Mike Wiltshire, 63 Shepherds Lane, Dartford, Kent, DA1 2NS, UK

USA: Floyd and Bernice Sarisohn, P.O. Box 166 Commack, N.Y. 11725 USA.

CCI BOARD

PRESIDENT: Dr. Thomas Thomsen, Konigstein, Germany
 PRESIDENT EMERITUS: Dr. George Dean, Southfield, USA
 TREASURER USA: William Fordney
 SECRETARY USA: Hope Levene
 TREASURER UK: Gillian Raynes
 TREASURER Germany: Lothar Heider

EXECUTIVES

Frank Camaratta, USA
 Floyd Sarisohn, USA
 Oscar D'Empaire, Venezuela
 Mike Wiltshire, UK
 Massimo De Angeles, Italy
 Sergio Bernal Villasenor, Mexico
 Gianfelice Ferlito, Italy

E-MAIL ADDRESSES

Floyd Sarisohn: Lichess@aol.com
 Jim Joannou: jimjoannou@btconnect.com
 Mike Wiltshire: m.r.wiltshire@btinternet.com

YOUR MOVE !

MEMBERS PAGE

Editor's Comment

I attended my first CCI Congress in May this year and thoroughly enjoyed myself. I was very much the "new boy" and was introduced to so many people that I know I will have difficulty in remembering all of their names. This issue is dedicated to the Berlin meeting and I hope it gives members who were unable to attend, a flavour of the event. For those members who were in Berlin, I hope this issue helps to keep your memories fresh. My overwhelming feeling and lasting memory from the congress is one of warmth and friendship. I would like to thank all those members who went out of their way to make me feel welcome.

There are only two minor changes to the magazine this time.

- 1) Due to some minor confusions and one or two comments, I am dropping the word "Spring or Summer, etc" from the issue number
- 2) The CCI Diary is moving to the inside, back cover. This is in preparation for a new item which will go on the back cover in a future edition.

Jim Joannou
Editor.

~~~~~  
**Members Comments.**

The magazine should be larger in order to contain more!

*There are two constraints on the size of the magazine, one being financial and the second being that we often do not get enough items / articles from members to fill the current 20 pages!*

Editor.

I've read many very good issues of "Chess Collector" in the 15 years I've been a member of CCI, and I'm glad to see you're maintaining a high standard as Editor. Keep up the fine work

Jim Brotsos

Could you thank, from all CCI members, Gareth Williams and Ned Munger who have been of great value over the years as authors of books and contributors of articles. It could be a good idea to include a portrait of the new Directors elected during Berlin, for those of us who did not attend the meeting.

Gianfelice Ferlito

*They were thanked by everyone at the meeting in Berlin, but I'm sure your comments are echoed by all of the membership. Maybe the new directors can supply a photo of themselves along with a few lines of their history*

Editor

~~~~~  
Front Cover

"The Garden of Love" The top section of this picture, showing two couples playing musical instruments and a third couple playing a game of chess, was part of the "Chess & Music" display at the Lasker Society. CCI members visited the society as part of the Berlin Congress this year. Photograph courtesy of Gareth and Vel Williams.

~~~~~  
Send your comments to :

The Editor. TCC

E-mail: jimjoannou@btconnect.com

Fax: +44(0)2086404796

Mail: 11 Furness Road

Morden, Surrey

SM4 6PS. UK

# REVIEW OF CCI BERLIN CONGRESS 22nd—28th May 2006

Jim Joannou

Monday 22<sup>nd</sup> May

Some members were still arriving on Monday so not all attended the Welcome Dinner.

Tuesday 23<sup>rd</sup> May

After registration, we boarded into two busses for an interesting guided tour of both old and new Berlin. Our first stop was the “Reichstag” building, where the German government now sits after moving from Bonn. Most of us made the spiral walk up the glass dome structure on the roof of the Reichstag, which afforded great views across the city. After a snack lunch, it was onto the Berlin Cathedral, where, as part of the tour, we were treated to our own “mini recital” by the cathedral organist, whilst we sat in the “royal” seats.

In the evening we visited the Parmagum Museum where the directors gave us an overview of the exhibits. Hans Hollander (CCI Member) gave a short talk, then, in the presence of the British Ambassador to Berlin, Sir Peter and Lady Angela Torry, we viewed the stunning exhibit of Islamic Chess pieces. The evening was rounded off by a boat trip and dinner on the river Spree.

Wednesday 24<sup>th</sup> May

This was the main lecture day and business meeting. Most lectures and the minutes of the meeting are reproduced in this issue.

On Wednesday evening we attended an exhibition and talks at the Lasker Society entitled “Chess and Music”. We were welcomed by the founder and Chairman of the society, Paul Werner Wagner and then treated to three pieces of “Chess-Music” played by pianist Juan Maria Solare.

These were:

- 1) MARCHE. Prokofieff. op65.
- 2) A ROOM. John Cage. (Composed in 1943)
- 3) TALISMAN. Juan Maria Solare. (Tango opening)

This was followed by several talks and a study of a piece of music by Philidor from Susanna Poldauf of the Lasker Society. Finally we heard Philidor’s No12 ARIA (Sophia) from his opera “Tom Jones”. During our buffet dinner we were all invited to sign the society’s guest book and have a final look around the exhibits before departing.

Thursday 25<sup>th</sup> May

A welcome late start saw CCI members browsing the auction items and trying to decide which items they could afford to buy later that day.

We departed the hotel for the opening of an art gallery exhibition at “Galerie Sophien Edition”. This modern, chess themed, exhibition, suggested by CCI member Wolfgang Angerstein, had been put together by Hella Itze and Sabine Kahra over the past 18 months. All of these unique exhibits were by local artists and comprised of paintings, drawings, chess sets, sculptures, etc and were offered for sale for the first time on the day. One or two CCI members parted with their money and purchased some items.

Back at the hotel, the auction was conducted by “Antiquariat A. Klittich-Pfankuch” and was well attended, but over half of the lots failed to sell. However several CCI members obtained some good bargains. There were three outstanding lots in the auction The first was Lot 27, a fine well carved Chinese ivory set from the first half of 19<sup>th</sup> century, sold for 4600 Euros against an estimate of 2200 Euros. Another was Lot 44, a rare and interesting Austrian set with box / board for both Chess and Backgammon. This sold for 3000 Euros against an estimate of 2500 Euros. By far, the most outstanding item of the day was Lot 42, an extraordinary Indian chess set with folding box / board for both chess and Backgammon. Highly decorated with a date of 1711 along with the monogram “KMP” inlaid into the ornamentation. With an estimate of 6000 Euros it eventually sold for a staggering 13,000 Euros.

# REVIEW OF CCI BERLIN CONGRESS

Continued

Friday 26<sup>th</sup> May

This was a more casual day with a chess market starting in the morning and a simultaneous chess match, with the Russian Grand Master Yuri Averbakh in the afternoon. The market, with 13 stalls, gave an opportunity for commercial companies and CCI members to display and sell Chess sets, and related products. First we had the Russian artist Yuri Garanin who had a fine display of blue porcelain items. Next came Floyd Sarisohn's stall where he was selling shirts, ties, key rings etc, all with a chess theme.

The next booth was for the "2es DACICE" company and they had several, large glass sets for sale. They also had on display the modern designed set, used in the film "Lucky Number Seven".

CCI Member Tony Raynes was next and he was promoting Wedgwood porcelain sets along with other sets, stamps and pictures. Wedgwood samplers were available and can still be obtained if required. Next came our only French CCI member present at the congress, Jacques Lamy. He has produced DVD's from previous CCI meetings (Firenze, 2000 and Washington 1996 and also the Italian meeting in 2005) and are available in both PAL and NTSC formats. Another CCI member, Rodolfo Pozzi from Italy had the following table where he had three of his sets displayed. A French 18<sup>th</sup> Century Dieppe set in Ivory, A 19<sup>th</sup> Century Edinburgh Upright set and finally one of his, now famous, Mongolian Chess sets.

A CCI Member also occupied the next booth. Andrea Wittcke from Russia was selling off some of his collection. His unique, English St George patterned set made of wood from the ruins of the old Windsor Castle in the UK sold very quickly. The ISTA (International Superior Tobacco & Accessories) stand displayed the final set, from a series of just five, depicting Napoleon's battle of Borodino in Moscow.

German porcelain manufacturer (and CCI Member) Barbara Flugel had several fine sets and other associated chess items like teapots, plates etc, on sale. Next came a stall with a single "Amber" Chess set made by Alexander Krykv from Russia. This unique set was sold on the day to a CCI member for 22,000 Euros. Hartmuth Hoppe, who lectured on the 2<sup>nd</sup> day, had a stall displaying some of his "Cubist" Chess designs.

Thomas Thomson's booth was next with a display of books, programmes, pictures and prints all for sale and he seemed to be doing some good business on the day. Finally we had another Russian artist, Nicolay Timoshchuk, who was selling Russian doll sets along with other figurative, mammoth ivory sets.

If CCI members would like to contact any of the above sellers at the market then please contact the editor who will be pleased to pass on contact details.

We then had a simultaneous chess match with the Russian Grand Master and CCI Member, Yuri Averbakh. He played 12 games against CCI members. Yuri won 10 games and drew 2. An impressive display!

Sat 27<sup>th</sup> May

There was an optional excursion to the town of Potsdam during the day and at least one CCI member came back with a Chess set purchased in a local shop. The evening saw the "Gala Dinner". It started with Cocktails in the bar followed by a wonderful 4 course meal with wine. We were then entertained by a singing trio, Vasiliki Roussi, Christoph Schobesberger and Matthias Klinder, who sang typical "Berlin" style songs. I'm sure all those present will never forget "Luft, Luft, Luft". We then had an additional, unscheduled, song by German CCI member Gottfried Ellinger. A final speech by our president, Dr Thomas Thomsen and it was over all too soon. Thomas Thomsen and his team are to be congratulated for the efficient organisation of this event.



Thomas Thomsen and Vel & Gareth Williams enjoying themselves at the Gala Dinner



## CHESS IN ART IN BERLIN.

(Presented at Berlin Congress)

Hans Hollander

Chess in Berlin has a great tradition. The first German chess club, the so-called "Alte Club", was founded in 1803 by some chess players of the civil society and it lasted until 1850. One of its most famous members was the sculptor Gottfried Schadow, who created the Quadriga of the Brandenberger Tor and for many years was the director of the club.

Other well-known members were painted by Johann Erdmann Hummel (about 1818). The picture (below) shows the moment, when Alois Hirt on the left hand side mates the painter Bury on the right. Standing behind is the Count of Brandenburg. The



scene is at night and we can admire the painter's skill in arranging several sources of light: Moonlight, Candles and reflections.

You can learn more about this chess club, it's members, history, art history and literary aspects, in the 2003 catalogue: *Schadows Schachclub. Ein Spiel der Vernunft in Berlin.*

What else can you find out in Berlin about chess? Some very interesting items were displayed in the museum of Islamic Art. (Visited by CCI members at the congress). But there is more. First of all, you will find

a very old chessboard In the collection of the Kunstgewerbemuseum (Museum of Arts and Crafts). It was used as the cover for the book for the Plenar of Otto the Mild and is dated approx. 1340. Fortunately most of the miniatures in this book, showing scenes from medieval adventures, and also a chess scene, have been preserved. There are only two more of these boards, one in Vienna, where it was displayed in 1998, and one in Aschaffenburg. In the same museum you must not miss the extant board and pieces of the Pommersch Kunstschränk. The board is from Ulrich Baumgarten, the pieces from J. Chr. Angermair. Chess Collectors who visited Braunschweig, St Petersburg and Hamburg in 2005, know more of this "factory", described again in the catalogue *Schachpartiedurch Zeiten und Welten. (Hamburg 2005)*. In the CCI program you may learn some special aspects of these boards. In addition you will find some more beautiful boards and gaming pieces in the same room of the museum. Three well-known representations of chess players are to be seen in the Gemaldegalerie (Picture Gallery). The first one, (below) "Schachpartie" by Lukas van Leyden, is dated 1508.



## CHESS IN ART IN BERLIN

Continued

Every chess enthusiast knows this picture, because it shows an 8 x 12 board, which means that the players are playing “Courier Chess”. Unfortunately, the position cannot be deciphered, and so not only the game, but also the whole picture remains rather mysterious

The second painting by Paris Bordone shows the portraits of two unknown Venetian lords at Chess. The right hand player just takes the piece with which he will mate his opponent. As we do not know the names and circumstances of the two persons, we cannot say what this mate means, but it must be significant. In the background we see an open hall of a palazzo, and, on the right, we find a group of card players.

The third painting by Ludovico Carracci (approx. 1590) (below) again shows two, well dressed, young men concentrating on their endgame, a mate, that cannot be really identified. The scene adds a new aspect to the signification of the game of Chess. It is not part of the representation of a social status, but centre of attention for the two persons.



## CHESS AROUND THE ARTIC CIRCLE

Wolfgang L. Angerstein

(Abbreviated Text of Paper Presented at the Berlin Congress)

This is a little journey around the North Pole, nothing scientific, but merely fun and entertaining. Our trip started along the Artic Circle in Scandinavia. A number of Nordic pieces were shown as in Fig 1



Fig 1. Nordic Chess piece

The Faroe Islands issued a series of stamps, telling the story of “The Farmer in the Wood” (The Ballad of Skrimsla). Where a farmer, walking through a wood meets a monster who challenges him to a game of chess.



Fig 2. Two stamps from a series of four.

## CHESS AROUND THE ARTIC CIRCLE

Continued

The farmer wins the game and a castle as a prize. Across the sea to Iceland and we learned about Prof Willard Fiske (1831 – 1904) who visited the island in 1879. He donated books to the remote Icelandic island of Grimsey, which founded their library. He also provided each household with it's own Chess set, and his birthday (11<sup>th</sup> Nov) is still celebrated annually on this little remote island. Later in his life he encouraged the game of Chess in Iceland by supporting the Reykjavik Chess Club, Starting a Chess magazine and publishing a number of pamphlets about the game, which were for free distribution in Iceland. His book "Chess in Iceland and in Icelandic Literature" Fig 3, was published posthumously in 1905.

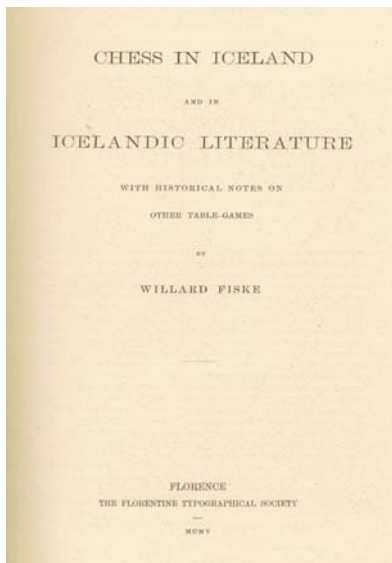


Fig 3. Icelandic Chess Book by Prof. Willard Fiske.

His own Chess book collection was left to the National Library of Iceland in his will. We also learned about an Icelandic Chess manuscript by Bjorn Gunnlaugsson (1788–1876) Gunnlaugsson was a teacher, Astronomer, Mathematician, Surveyor, and prolific cartographer. The manuscript appears to have been a conveniently portable record of strategies and a document of

selected historic games. Chess still plays an Important role in Iceland, where the game



Fig 4. Eskimo set from Walrus Ivory. has a strong connection with the country's Viking legacy. Iceland is also famous for the Fischer – Spasky World championship match in 1972. We were then treated to a selection of "Eskimo" chess sets from Greenland. Fig 4, before moving on to Alaska, Fig 5.. Our last stop was Russia,



Fig 5. Alaskan Eskimo Chess set. Walrus Ivory.

and the northern city of Kholomogory. Again a number of pieces and sets from this famous centre of Chess production were shown. Fig 6. The talk was rounded off with a 3 minute video of a Kholomogory Ivory carver.



Fig 6. Ivory set made in Kholomogory



## MINUTES FROM THE BUSINESS MEETING OF THE CCI CONGRESS. 24TH MAY 2006 IN BERLIN

Hope W. Levene. Secretary.

President Thomas Thomsen opened the meeting on May 24th at 2 PM.

He announced that Gareth Williams and Ned Munger had resigned as board members. He proposed Michael Wiltshire and Floyd Sarisohn as their replacements. Gianfelice Ferlito was also considering resignation and Max Deangelis was proposed as his replacement. George Dean moved that they all be elected. The motion was carried by a unanimous vote. (Note: Gianfelice Ferlito has decided to carry on as a board member along with Max Deangelis.)

Tommy Thomsen said that although the membership of CCI had grown there was a marked drop in the attendees at the meeting. The number this year appears to be about 60. There followed a discussion of the publishing of addresses of members. It was generally agreed that at least e-mail was all right. Bob Dinsmore proposed that it be left to the individual members to provide the amount of information that they wished to appear in a membership listing. A discussion of how to attract new members ensued. Hans Krieger said that the European Youth Championship in Dresden, 2007 would be an opportunity to introduce young players to chess set collection. Perhaps through an auction of, not too expensive, sets. Tommy said that there had not been much public response to the forthcoming auction. In the general discussion it was suggested that CCI advertise in chess federation magazines. Tony Raynes thought that we should concentrate on chess markets instead of auctions. Tommy said that we should try to find out through the auction houses who are bidding on sets. Max mentioned that Italy has a CCI website.

Franz Josef Lang proposed that we ask the auction houses to offer information about CCI auctions.

We should try to use our connections to try for CCI publicity. Billy Levene said that players are generally not interested in sets.

We should try to convert players into collectors. He made a motion to ask each national group to appoint a member to deal with public relations. These members were to communicate with each other. The motion was carried. Jurgen Stigter commented on the cooperation with the Kenneth Whyld Association (books), which is minimal probably because of the high expense of CCI meetings.

Location of the next meeting will be decided by the Western Hemisphere members. Sergio Bernal offered to host a meeting in Mexico City or Las Vegas. The total group expressed appreciation for the Williams' contribution in editing and publishing the newsletter. The new editor, Jim Joannou asked people to send him material.

In a final general discussion it was suggested that the cost of meetings keeps people away. Dates are difficult because of conflicts. Could we offer cheaper hotel accommodations? Franz Josef thought that meetings were too long. Perhaps optional events could be put at the end of the meeting.

### Advertisement

Large Stock of Secondhand & Out-of-  
Print Chess Books Online at:  
[www.chessbooks.co.uk](http://www.chessbooks.co.uk)  
Also Catalogues by Post or email:  
[tony@chessbooks.co.uk](mailto:tony@chessbooks.co.uk)

## ***IMAGES FROM THE CONGRESS, BERLIN 2006***



CCI Members lunching at the Reichstag, Berlin



Members enjoying their own private recital at the Berlin Cathedral



CCI members and the British Ambassador hearing about an exhibition of Islamic art.



One of the displays of Ancient chess Pieces at the Parmagum Museum



CCI Members viewing the auction items



Thomas Thomson with Sergio Bernal and his wife & baby before the Gala Dinner

# IMAGES FROM THE CONGRESS, BERLIN 2006



Russian Grandmaster Yuri Averbakh Playing simultaneous chess with CCI members



A Berlin Trio Entertaining CCI members at the Gala dinner.



Mike Wiltshire, Uri Averbakh & Jim Joannou at the Lasker Society.



Modern chess sets made from polyester at Galerie Sophien Edition exhibition, Berlin.



## Advertisement

AN ARTIC CIRCLE  
CARVED WALRUS IVORY  
CHESS SET AND BOARD,  
POSSIBLY NORTH  
RUSSIAN, CIRCA 1920  
Estimate £3000-5000


**Viewing**  
16-20 September

**South Kensington**  
85 Old Brompton Road  
London SW7 3LD

**Enquiries**  
Pippa Green  
pgreen@christies.com  
+44 (0)20 7389 2760

**Catalogues**  
+44 (0)20 7389 2820

View catalogues and  
leave bids online at  
[christies.com](http://christies.com)



**THE ETTORE CHIESA  
COLLECTION OF CHESS SETS**  
20 September 2006

**CHRISTIE'S**  
1850-2006



# NEWS IN BRIEF

## FIDE President Re-Elected

The president of FIDE, Kirsan Illyumzhinov has been re-elected for another term. He won by a wide margin of 96 votes to 54. President Illyumzhinov promised to address a number of concerns that were raised during the re-election campaign.

More information can be found on:  
[www.fide.com](http://www.fide.com)

~~~~~

New find in China

Archaeologists have found two ancient engraved game boards probably used by soldiers on the Great Wall more than 700 years ago at Qinhuangdao, North China's Hebei Province.

The two boards, one for Chinese chess and the other for the ancient game "Tiger Eats Sheep", were engraved on a stone in front of a Great Wall beacon tower possibly in the Song Dynasty (960-1279), said officials with the provincial department of cultural relics. More information at:
http://english.people.com.cn/200606/05/eng20060605_271116.html

~~~~~

## Unknown Chess Players ?

This statue of two men playing chess sits in the John Marshall Park near the Federal Court House on Pennsylvania Avenue., Richmond, Virginia, USA. Can anyone provide further information ?



## A Chess set with Built in Speed

This chess set from the Renault F1 Team Collection is made from parts of F1 cars.



The board is made from the same carbon fiber as the Renault F1 cars. The chess pieces are made from parts of the wings, hubs, cockpit and suspension. Whilst the materials used include titanium, aircraft grade aluminum, sterling silver and leather. Guess what, the board is made from carbon fibre. The dimensions are 63.5 cm's by 63.5 cm's. If you feel like plopping down USD35,000 (£21,000) to indulge your inner Kasparov, it's available for purchase from the Renault website

~~~~~

Please send in your news items to the editor at
jimjoannou@btconnect.com

Note:

There is no website review in this issue due to the large number of other items included. A review of the Ken Whyld society website will be in the next issue.

SOME POLITICAL-SOCIAL SITUATIONS IN MONGOLIAN CHESS SETS

(Presented at the Berlin Congress)

Rodolfo Pozzi

After many years of passionate wandering in my research on Mongolian chess, I did not expect to find anything original, like ideas, chessmen and their related meaning. But some interesting news came to me.



Fig 1.

Handcuffed Lamas

Some Mongolian sets are clearly reflecting the social and political environment of their historical moment. A wooden painted set opposes Mongolians (Yellow or green bases and red pieces) versus soviet communist soldiers (Red bases and yellow/green pieces). From 1936, the year of the Tchoi Balsan's law, the "Asiatic Stalin", and in a genuine and realistic manner it represents the outcoming of this provision, that is the terrible repression that the Buddhist religion had to suffer during that period. The Kings (Noyion) are seated on Russian chairs. (Fig 1) The Mongolian general wearing the traditional black "del", while his opponent has the green soviet uniform and black trousers. The Queens (Bers) are represented by ferocious dogs. The Mongolian *Bers* has a long tail with hair on the tip and tufts on the neck and leg. The Soviet side shows lowered ears, thick fur and a flower on the tail. The Pawns (Huu) are the progeny of the animal Queen; typical from this region, as once the pawn reaches the last rank it can only be changed into a Queen.



Fig 2.

The Bishops (Temee) are, as usual, camels with two humps. The Mongolian ones proceed at an amble and have sagged humps, whilst the others stand still with straight humps. The Knights (Mori) on the yellow side are ambling stallions. The red side are geldings; their mane is cut and are standing with one ear forward and the other backward, as in the attitude of listening to the "enemy" on both sides.



Fig 3.

In the sets from this area the Rooks are generally reproduced as carts or coaches (Terghe). The traditional nomadic means of transportation. But with the oncoming Russians, as actually occurred, those were sometimes replaced by motorised transport. In this set (Fig 2) the rooks of the Mongolian side are trucks transporting handcuffed lamas kidnapped from the monastery. The monks forced to wear a black garment, instead of their usual orange robe during their transfer to prisons or confinement. The soviet patrolling motorcars, escorting the trucks are the rooks of the opposing side.

Double Horsemen

Another chess set, wood carved and from the 18th C, (Possibly 1790ca), Fig 3, which I consider unique of its kind, opposes the red side to a yellow one and manifests an interesting syncretism between Mongolian and Manchurian customs in the times when China and Mongolia were ruled by the Manchurian Qing dynasty.

SOME POLITICAL-SOCIAL SITUATIONS IN MONGOLIAN CHES SETS
Continued

THE CHESS SET OF GIOVANNA BOLOGNINI

(Presented at the Berlin Congress)

Milli Pozzi



Fig 4.

I call it “Double Horsemen”, since eleven pieces out of sixteen in the yellow side are carved to form two horses, mostly with riders. The King-Noyion of the red party has no less than four horsemen Fig 4. He is a Manchurian nobleman, carried in a sedan chair supported by four horses and strapped to the stirrups of the Mongolian riders. Curiously enough, the tails of the two front horses are tied to each other so as not to bother the two behind them.

Wrestling has always been one of the three traditional Mongolian sports, and here Fig 5, the pawns are couples of wrestlers in different positions, wearing clothes commonly used up to the middle of the 19th C. The pawn on the right is a young wrestler that here, according to an ancient tradition, is training himself with a heavy stone.



Fig 5.

Two horsemen represent the King on the yellow side. The knights are mares nursing their colts Two flanked horses with riders form the pawns, and they almost stand still. In one of them the horses are in motion with the riders whipping them.

Since 2003, I have also been the owner of a contemporary art gallery located in the historic centre of Como, Italy, my city. In this space I curate art exhibitions at a national level, and have been a partner in international events, involving renowned and established artists and promoting new talents of indisputable value, authors of works produced exclusively for the gallery. The intent of the gallery has always been to encounter the public and collectors, cultivating art for both its seductive power and its investment value.



Fig 1.

My passion for chess has led me over time to conceive the idea that the meeting between this game and contemporary art could produce great results. Over the years many important artists have explored this direction. One of them, who was famous for his love of chess, was Marcel Duchamp; he expressed this encounter beautifully in the following words: “The chess pieces are the alphabet that shapes thought, and these thoughts express beauty in an abstract way”. I thus think that it is fundamental, even for collectors like us, to not limit ourselves to searching for, loving and preserving historic pieces, even when their value is immeasurable. I think it is vitally important to invite contemporary artists to produce new pieces, stimulating original creation and the application of art to this game. So I am beginning to organise a

THE CHESS SET OF GIOVANNA BOLOGNINI

Continued

system in which artists are commissioned to create chess sets, either as one-of-a-kind or limited series editions. To give you an example, here (Fig 1) is a work that I commissioned from Giovanna Bolognini, a sculptor from Bergamo.

Giovanna Bolognini created a chess set made out of iron, with silver and copper inserts that differentiate the two sides, equipped by a chessboard, also of iron. Her design was inspired by the ancient shamanic legends of Mongolian players, transformed by the sensitivity of a woman of her time. From the picture you will understand the artistic value of this work and its importance to collectors.



Fig 2. The Two Kings.

I have also commissioned Giovanna Bolognini to make another set, to be produced in a limited and numbered series, and I hope this will meet with your approval, inviting you to contact me if you are interested in the work by this sculptor or other artists with whom I have already reached an agreement to create new art chess sets.

OBITUARY FOR JEAN-CLAUDE CHOLET

Roldofo Pozzi



Jean-Claude Cholet at home with his wife Monique.

The News caught us unaware: Jean-Claude Cholet (CCI Member) had passed away. We knew about his illness, but always we refused to believe that it was terminal.

We have been friends for about 10 years, during which we have exchanged agreeable visits in Como and in St Germain-en-Laye, where we admired his splendid collection. He and Monique were always in common agreement, and harmony. Jean-Claude was a man of our times, always smiling, serene, quiet in speaking and in composure of his gestures.

It is sad to think that after working intensively for many years, and shortly afterwards to have transferred his orthodontist office, he did not have the possibility to enjoy a period of retirement, to completely dedicate himself to his preferred hobby.

To have lost a friend as exquisite as he was, fills us up with sorrow, and, with a kindly thought we stay very near to his wife Monique. She will feel his vacuum that cannot be filled.

The Italian collector friends remember Jean-Claude with affection and respect, but above all in the interesting and pleasant days spent together both at the CCI Congresses and the National Italian meetings.

SHORT ABSTRACTS OF OTHER TALKS GIVEN AT THE CCI BERLIN CONGRESS

ECONOMICS OF CHESS COLLECTING

(Chess sets in the Art Market)

Dr. George Dean

Dr George Dean’s talk focused on how the value of Chess sets have risen over the years and that they are a good investment for the future. Several collections and specific sets were referred to during the talk.



A Mr Harvardson, who was a collector from the 1920’s, kept detailed records of his sets, including how much he paid for them. From these records and others, like auction reviews, we are able to trace the rise in prices.

Sets from the 1970’s have risen in value by 3, 4 or even 5 times. A Teak and Ivory set from Thailand purchased for \$150 is now worth 10 times as much. An Indian Rha-jestan set purchased in 1960 for \$1000 recently sold at auction for \$20,000.

In 2004, the Artist Damien Hurst, designed a chess set for “The Art of Chess” Exhibition in London and consisted of Glass and Silver cast as medicine and pill bottles It was valued at \$100,000. In 2006 the same set is now valued at \$300,000!

Dr. Dean also added some words of caution when buying at auctions. Always check the provenance and the descriptions.

CHESS HISTORY STARTING WITH V. D. LASA

Yuri Averbakh

The Russian Grandmaster Yuri Averbakh traced part of the early history of Chess through chess design. In general terms chess pieces were originally figurative in nature, then they became abstract in design with the Muslim influence and then back to figurative themes when chess spread into Europe.

With the Norman conquests of England and Southern Italy, they influenced chess design at the time, which can be seen from the shape of the “shields” depicted in the sets. We can also see changes in design on the sets depicting the various battles of Napoleon. (e.g. Napoleon Vs Emperor of China) and in some Muslim sets

~~~~~

### WOMEN AND CHESS

Billy Levine

(A full text may be published in CCI-USA)

This short talk highlighted the contribution of women to the chess collecting world. From designers of chess sets to authors of books and articles. Interspersed with anecdotal stories, note was given to female CCI members / collectors along with museum curators and dealers.



# An Oblique View of Chess

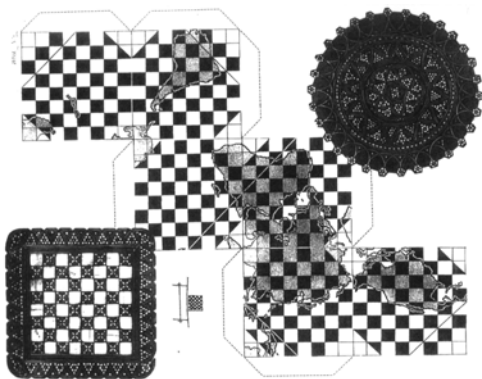
(Presented at the Berlin Congress)

Hartmuth Hoppe

This is an extract of Hartmuth Hoppe's, mainly pictorial, talk. A full copy of his text in German and translated English, along with more of his designs can be found at [www.antipods.com](http://www.antipods.com)

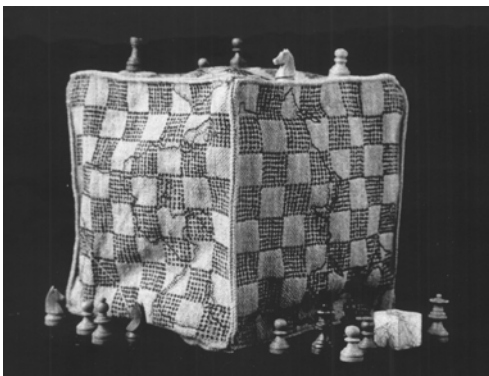
In this paper I will try to tell you a little of what I think about!

I tried to model the earth in the shape of a chess cube. Rectangular and rectilinear.



It might be considered a simple deformation. Luckily the basic relationship of the continents does not suffer. The North and South poles make up the primary corners and the Ural Mountains, which are the backbone of Asia and Europe, become the first of the edges.

The continents keep to the sides of the cube; only Southern Africa and India fold over an edge. Australia keeps to a corner position between the three southern seas. Developing the envelope of the cube you easily see possible variations.

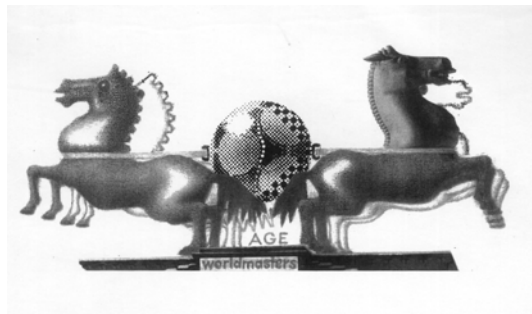


A "Chestnut" might be even more tasty.

Visitors to the CCI conventions in Munich and Vienna must have a coach and a fitting team of horses. The coach was also noted at the Brandenburg Tor.



Below are some "tractive powers in activity"



# AUCTION REVIEW

Gareth Williams

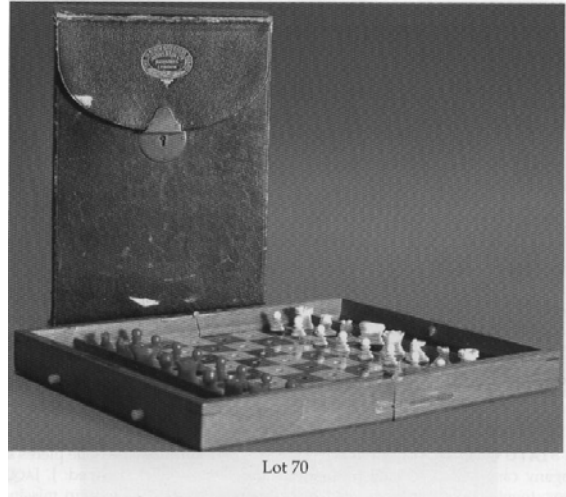
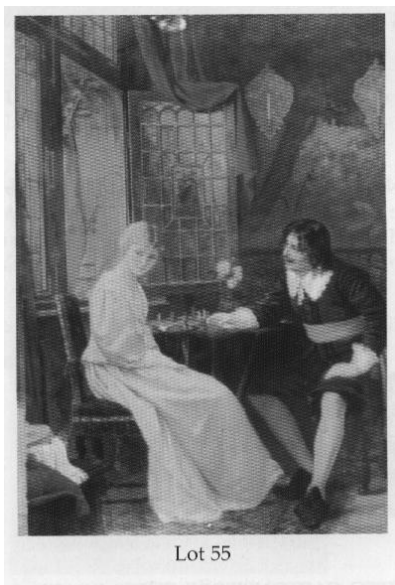
## Bloomsbury Auctions: Chess Sets and Traditional Games – 18<sup>th</sup> May 2006

Bloomsbury Auctions now have a web site [www.bloomsbury-book-auct.com/index](http://www.bloomsbury-book-auct.com/index) Its opening coincided with the 'Chess Sets' auction. Rupert Powell, Bloomsbury's Managing Director, launched the web site with a short 'Welcome' statement; "I am delighted to introduce you to Bloomsbury Auctions website. I strongly believe that buying and selling at auction to be fun and exhilarating – we will do everything possible to make it an enjoyable experience.

From Luke Honey, responsible for the inauguration of chess sales to Bloomsbury, there is a proud statement declaring:

"I think that now, after our fourth highly successful sale, Bloomsbury Auctions has consolidated its position as the leading chess auctioneers."

This statement is followed by a summary of the sale pointing out the highlights, that over 80% of the lot's sold, there was very active international bidding, and that the highest prices were being obtained from private collectors for the rarest sets.



The date for the auction had been set to be convenient for CCI's Berlin congress, which commenced the following week.

There was certainly an international attendance among the enthusiastic bidders at the venue. As usual, there was also strong competition from bidders on the phone and from the intrusive Internet.

There were 163 lots creating an interesting variety of chess related artefacts, together with other olds games. The auction started well with the book section, most of the lots selling above their estimates, although a few did fail to reach their reserve. Lot 67 caused a surprise, a standard Jaques rosewood, mahogany and boxwood chessboard 20" square, with a top estimate of £250 sold for £952. Another Jaques item did better than expected, Lot 70, a "In Statu Quo" travelling set, 19<sup>th</sup> century, size 9"x 11.5", including the original case, obtained £833 against an estimate of £3/500. (Illustrated) A beautifully carved and rare South German wood set, lot 123, estimate £4500/5500, sold for £7140. (Illustrated above)

## Auction Review

Continued

Lots 108,161and154, three traditional classic sets, according to sale prices, were the most outstanding of the auction.



Lot 108

Lot 108. A traditional 18<sup>th</sup> century Russian Kholmogory, walrus ivory set, including original Kholmogory inlaid bone display box that sold for £892. (Illustrated above)

Lot 161. Another traditional favourite 19<sup>th</sup> century Rajasthan ivory set, polychrome green against red with gold trimming sold for the same price as lot 108. £8,925.

Lot 154. This was the star of the auction, prominently illustrated on the front cover of the auction catalogue, it can be seen as an exceptional model of an Indian ivory 19<sup>th</sup> century 'John' chess set, from Berhampur. Estimated in the range of £12000 to £18000, it sold for a handsome £21420. (Illustrated below)



Lot 154

Bloomsbury Auctions plan to hold their next chess related sale at the end of October 2006.

## CCI DIARY

### Bonhams Auctions

3rd Sept 2006

Knowle, Midlands, UK

Details to be announced in due course

### Christies Auctions

20th Sept 2006

London, UK

The Ettore Chiesa Collection of Chess sets

Further information from:

[pgreen@christies.com](mailto:pgreen@christies.com).

(See page ? For Advertisement)

### Bloomsbury Auctions

23rd Oct 2006

London UK

**Fine Chess sets and  
Traditional Games**

Bloomsbury auctions have already sent an initial mailing to registered persons  
More information can be obtained from:

[Luke@bloomsburyauctions.com](mailto:Luke@bloomsburyauctions.com)

*Do you know of a Chess related event  
that should be listed ?*

*Send it in via e-mail to the Editor:  
[jimjoannou@btconnect.com](mailto:jimjoannou@btconnect.com)*

### Next Issue:

Ken Whyld Society Website Review  
Article on Diego D'Elia  
News, Views & Pictures

## Advertisement



**OWN A GENUINE ORIGINAL WEDGWOOD (MADE IN ENGLAND) JASPER PORCELAIN CHESS SET BY FLAXMAN**

**2006 ISSUE (MAXIMUM OF 20 SETS PALE BLUE v WHITE PLUS A SMALL QUANTITY OF OTHER COLOURS ie: SAGE GREEN v LILAC, BLACK v WHITE and OTHER COLOURS TO SPECIAL ORDER)**

**This fantastic chess set was 1<sup>st</sup> made in 1784 and then reproduced a small number of times since then. As a very keen collector of English Porcelain Chess Sets I have had, at enormous expense, the moulds refettled once again and can offer a small number of chess sets per year. (As long as the moulds last)**

**All the individual pieces are stamped WEDGWOOD MADE IN ENGLAND, YEAR 06 and INITIALS of MOULDER.**

## OWN A PIECE OF ENGLISH HISTORY

**As a fellow collector I am also prepared to take in old ceramic and porcelain, odd pieces or sets especially English, in Part Exchange for a New Wedgwood Set.**

**Anyone interested please contact myself. Tony Raynes for details**

**Tony Raynes. West House. Warren Drive, Hale Barns, Cheshire, England. WA15 0RP.  
Tel: 0161-980-8881, Fax: 0161-980-1972, email: aeraynes@aol.com**

