

# The CCI-USA News

## Chess Collectors International

Vol. 2007 issue I

### IN THIS ISSUE:

Get ready and make your reservations! The **Fifth Western Hemisphere CCI meeting** will take place in beautiful San Francisco in May 25-27, 2007. Details on page 2.

**Max De Angelis** writes: Dear CCI Friends, During the International CCI Congress held in Berlin in May 2006 we came in contact with Patrice Plain, a new very active member with whom we immediately built a friendship. In the progress of such contact and further visit in Troyes (city where he resides together with his family) by Milly and Rodolfo Pozzi we have decided to join forces with the French CCI branch and organize a joint Congress.

This will enable those who want to participate of visiting rarely yet very interesting sites in addition to a possible stay in Paris before or after the congress.

Hoping that all of you can adhere such program both Patrice Plain and I send you our warmest wishes. Details on pages 3-5.

What are the characteristics of Japanese ivory chess sets as compared with Chinese? Want to know what **"Army of Occupation"** chess sets are? **Floyd Sarisohn** reviews the history and suggests useful tips, accompanied with wonderful photos of Japanese chess sets owned by several CCI members. See pages 6-9.

Like to play with matches? What about Phillumeny (the hobby of collecting Matches and related items)? This article first appeared in Chess Stamp Review and an extract is brought to you, reprinted here with permission, from CCI member **Ray Alexis**, on pages 10-11.

Did **Charlemagne** ever play Chess? Did the famous Moslem ruler Haroon-al-Rashid present a marvelous chess set as a gift to Charlemagne? Find out more about this beautiful 11<sup>th</sup> century chess set on <http://history.chess.free.fr/charlemagne.htm>, reproduced closely to the source on pages 12-14.

Have you considered buying a **\$500,000** chess set? How about a **\$250,000** set? Such sets are not normally purchased by CCI members, but by

wealthy art collectors. Many beautiful sets are bought by collectors for under a \$100. See featured article about a JFK and a gold & diamond set for (bargain) sale on eBay. Get a smile on page 15.

**Pieces Wanted.** Check this feature in the Classified Ad section. Perhaps you have the one special chess piece that another CCI member needs to make a set complete.

All this and more are only a few of the benefits of being a CCI member. To make sure that you do not miss out on notices of all these important chess collecting publications and activities, **keep your membership in CCI current** - promptly send your 2007 dues to your local treasurer. **Western Hemisphere** members, your \$50 dues for 2007 membership are now overdue! Please mail your check to **Bill Fordney at 106 East Greenbriar Dr., York, PA 17407-1014**

### CHESS LINKS:

Interesting collections and chess related information could be found at the following. Note that most also provide additional, related links to many additional chess collections.

CCI International - [www.chesscollectors.com](http://www.chesscollectors.com)

CCI France - [www.ccifrance.com](http://www.ccifrance.com)

CCI Italy - [www.cci-italia.it](http://www.cci-italia.it)

Garrick Coleman – [www.antiquechess.co.uk](http://www.antiquechess.co.uk)

Virtual chess - [www.xs4all.nl/~chess01](http://www.xs4all.nl/~chess01)

Gene Zelazny - [www.zelazny.com](http://www.zelazny.com)

Jon Crumiller - [www.crumiller.com/jon.htm](http://www.crumiller.com/jon.htm)

Remi & Israel Raphaelli – [www.ogdir.com/chess](http://www.ogdir.com/chess)

**The future and quality of this publication depends on your contributions. Send comments, notes, reports, articles, photos, stories, websites, etc. via email to Floyd Sarisohn at [lichess@aol.com](mailto:lichess@aol.com) or Israel Raphaelli at [chess@ogdir.com](mailto:chess@ogdir.com).**

## SAN FRANCISCO – WE ARE (ALMOST) HERE

### FIFTH WESTERN HEMISPHERE CCI MEETING FRIDAY, MAY 25 TO SUNDAY, MAY 27, 2007 San Francisco, California

By now CCI members should have received a mailed announcement of our 5th Western Hemisphere CCI meeting which will be headquartered at the Palace Hotel, in San Francisco, California. Since only a limited amount of rooms have been reserved for us for this meeting at a reduced rate, members are urged to make their hotel reservations as soon as possible. Particularly if coming early or staying later. Our reduced rates are good for Wednesday May 23 through Monday evening, May 28.



Reservations should be made directly with the **Palace Hotel toll-free, at 888 627 7196**. For the low rate of \$209 per night be sure to identify yourself as a Chess Collectors International member. Hotel address is 2 New Montgomery St., San Francisco, CA 94105. Fax 415 243 8062.

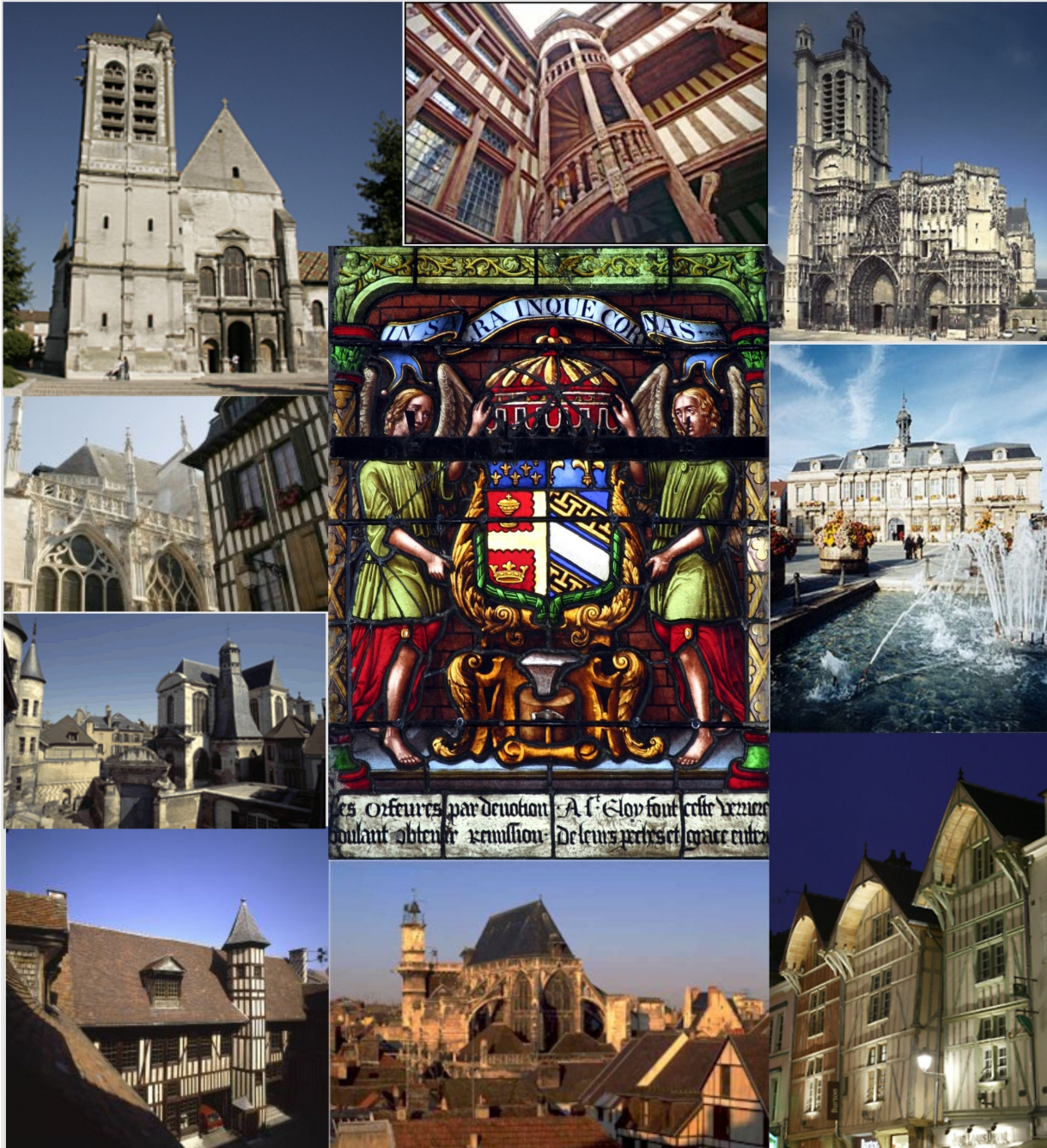
Registration fee to attend is \$145 per person until April 15, 2007. After April 15, registration fees are \$165 for members. Non-members fees are \$40 higher. Registration fees should be sent to **Bill Fordney at 6 East Greenbrier Dr., York PA 17407-1014**. Registration fees will include a Welcome diner on Friday evening as well as lunch and dinner at the Hotel on Saturday and a Harbor boat ride and brunch on Sunday.



Our program will start early on Friday morning and end around 1:00 or 2:00 PM on Sunday. There will be free admission to our chess fair and our exhibition of chess sets at the Palace Hotel on Saturday afternoon.

Anyone interested in selling chess items at the chess fair on Saturday or who desire further information about the schedule for our Western Hemisphere meeting should contact **Bernice or Floyd Sarisohn at PO Box 166, Commack NY 11725, phone 631 543 1330, Fax 631 543 7901 or email: Lichess@aol.com.** □

# Congrès du CCI France et Italie septembre 2007 à Troyes



*Troyes, ville des Comtes de Champagne, vous accueillera pour ce congrès et pour vous faire découvrir son patrimoine historique. Ancienne ville Gallo-romaine, elle n'a cessé de se développer, en particulier au Moyen-âge et offre aujourd'hui à ses visiteurs un ensemble unique d'églises, de maisons à colombage et de musées. Bienvenue à Troyes !*



## First French CCI Congress Sixth Italian CCI Congress



Friday September 28th – Sunday September  
30th  
TROYES

Hotel « Le champ des oiseaux  
« La maison de Rhodes »  
10, rue Gonthier  
10000 Troyes



Tél. +33 (0) 3 25 80 58 50 - Fax. +33 (0) 325  
31 110

**French- Italian meeting of the CCI comes in Troyes in Champagne.**

### Friday September 28th

-6:30 p.m. registration at the hotel Le champ des oiseaux et La maison de Rhodes, two typical house of the 15th an 16th centuries. The hotel is situated in the historical heart of Troyes, near the cathedral and the Modern Art museum.

-7:00 p.m. Gathering and welcome to all the participants

-8:00 p.m. Walking from the hotel to the restaurant « L'illustré ». This restaurant provides typical French cooking of the Troyes area.

-11:00 p.m. Walking back to the hotel

### Saturday September 29th

-8:00 a.m. Breakfast at the hotel.

-8.45 a.m. Welcome by Patrice Plain and Max De Angelis

-9.00 a.m. Lectures

- Rodolfo Pozzi : Set francesi particolari (Jeux français particuliers) (Particular French chess sets)
- Jacques Lamy : Les jeux d'échecs fait par soi même (I giochi di scacchi fatti da se) (Self made chess sets)
- Massimiliano De Angelis : Scacchi italiani non figurativi del 1700 e 1800 (Echecs italiens non figuratifs du 17<sup>ième</sup> et 18<sup>ième</sup> siècle)
- Patrice Plain : Histoire africaine du jeu d'échecs (Storia africana degli scacchi) (African history of chess)

--12:30 a.m. Transfer by bus to a typical Champagne vinery, visit and wine-testing

-1.00 p.m. 2.30 p.m. Lunch at the vinery

- 2.30 p.m. Return with bus to the town center
- 3:00 p.m. Visit of the « Musée de l'outil » with a chess exhibition
- 4.30 p.m. return with bus to hotel
- 5.45 p.m. Transfer by bus to Plain house
- 6:00 p.m. Cocktail at the Plain House
- 7.45 p.m. transfer by bus to restaurant
- 8:00 p.m. Dinner at the Royal Hotel
- 11:00 p.m. Return by car to the Hotel

### **Sunday September 30th**

- 9:00 a.m. Breakfast at the hotel.
- 9.15 p.m. Italia and/or France assembly (For non CCI Italian or French members guided visit of the Cathedral).
- 10.00 a.m. Visit of Modern art museum of Troyes
- 12.00 a.m. Goodbye lunch at the restaurant "Le jardin gourmand"
- 2:00 p.m. Walking tour of the old town center
- 3.30 p.m. Chess market
- 4.00 p.m. Return to the hotel

### **Congress Registration fee**

The Congress registration fee is € 195  
It can be paid directly during the registration in Troyes

This fee includes:

- All bus transfer
- All dinners and lunches
- Tickets at the Modern Art Museum and Musée de l'outil and chess exhibition.
- The hotel rate are from € 100 to € 240. It has to be booked directly by you as soon as possible and before the end of April.
- It is possible to organize, for international members, transfer from Orly and Roissy airport to the hotel in Troyes. Please contact Patrice Plain.

-

For local and general information

**Patrice Plain : E-mail [pplain@wanadoo.fr](mailto:pplain@wanadoo.fr) Mobile +33 611 582 652**  
(Max De Angelis : E-mail [maxchess2001@yahoo.it](mailto:maxchess2001@yahoo.it) Mobile +39 335 819 926)

## JAPANESE IVORY CHESS SETS

by Floyd Sarisohn

With the advent of eBay, many tea stained (brown) chess sets have been up for sale, often mislabeled as Japanese, and even more frequently mislabeled as 19th century. From the collections of CCI members **Phil Brykman**, **Irwin Gross** and the **Long Island Chess Museum**, we are printing several pages of pictures of this style chess sets to make it easier for members to identify and differentiate from Chinese ivory chess sets. Phil and Irwin have become leading collectors of Japanese chess sets with a large quantity of different sizes and styles in their collections.

From these pictures one can easily see a particular pattern amongst these sets, while noting the small differences that do exist. Although the King size is usually around 2 ½ inches, some sets in the collections of the three members noted above are as small as 1 7/8 inches and others as tall as 5 inches. Virtually every set is brown (tea stained) and white. The only set in the pictures in this issue of CCI-USA that is colored, is a rare porcelain set of this Japanese style. Of the characteristics that differentiate Japanese from Chinese sets of this period (20th century), is the usual bald head of

the bishop; the shape of the pagoda for the rook; the gowns of the Queens; and the Japanese style shoulder pads or helmets of the knights.

Almost all of these sets were packed in a folding box board and the pieces inside held in place by elastic bands. Since tea staining of chess sets was rarely, if ever, done in the 19th century and the elastic bands were not generally manufactured prior to the 20th century, it is difficult, if not impossible to claim that any of these sets were of 19th century origin. As a matter of fact, virtually every set that we have been able to produce a provenance for, identifies the set as being sent home from Japan by Army of Occupation troops from 1945 to 1975, thus the sub title of **“Army of Occupation”** chess sets. It is possible that a few of them may have been carved prior to WWII. However, considering the fact that Japan was not very open to the western world before WWII and that the International form of chess was not a game commonly played in Japan before WWII, it is doubtful that many, if any, sets of this style were carved earlier than 1945. □



# JAPANESE IVORY CHESS SETS

by Floyd Sarisohn



# JAPANESE IVORY CHESS SETS

by Floyd Sarisohn





# JAPANESE IVORY CHESS SETS

by Floyd Sarisohn



Phillumery is the hobby of collecting matchbox labels, matchboxes, matchbook covers, matchbooks, and any other match packaging.

A brief history of matches:

- ❖ 1669-Phosphorus is discovered and soon used on match heads
- ❖ 1680-Robert Boyle coats a piece of paper with phosphorus and a piece of wood to create fire
- ❖ 1827-John Walker, an English chemist creates the first friction matches
- ❖ 1885-Safety matches patented by Johan Lundstrom of Sweden
- ❖ 1889-Joshua Pusey invents the matchbook
- ❖ 1910-Diamond Match Company of the US invents the first nonpoisonous match
- ❖ 1911-President Taft asks Diamond Match to remove patent for "the good of mankind"
- ❖ 1960-Atlas Match of Arlington, Texas founded. Now the world's largest matchbook producer

A recent issue of Chesstamp Review depicted some box matches with chess pieces for sale. I had accumulated material to write this article long ago; seeing those matchboxes reminded me that I had promised our editor this article.

Jonkoping, Sweden has the world's only match museum, located in a building that was once the first match factory in Jonkoping.

If you are looking for something out of the ordinary, visit this museum the next time you are in Sweden. Or visit their website at <http://www.jonkoping.se/kulhlr/matchmuseumie ngindx.htm> They have a wide range of matchboxes, labels, posters, books, and much more.

My research started with a Google Image Search for "phillumery + chess" and came up with 32 images. I have a preference for matchbox labels (primarily a British preference) because they are a form of poster stamps, and more closely related to the Chesstamp Review objective; as opposed to matchbox covers (primarily an American preference). All the

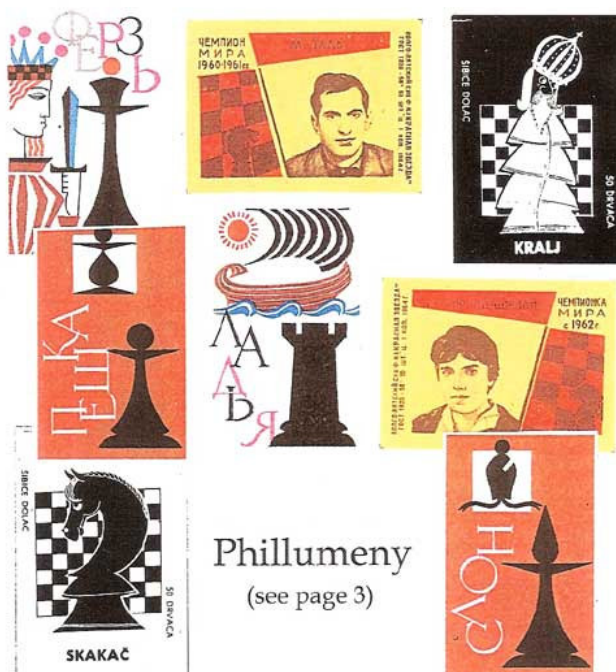
images had been submitted by one site. Visit <http://phillumery>. and you will find a treasure trove of chess matchbox labels. These images print beautifully in color, so if the original labels are unobtainable, then reproductions are still



## CHESSTAMP REVIEW #124

Volume 28 Number 4

Oct-Dec 2006



Phillumery  
(see page 3)

pleasing to the eye.

References:

Matchbox Labels by Firefly books ISBN 1-55297-978-4

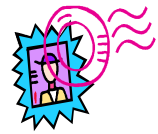
<http://phillumery.onego.ru>

<http://inventors.about.com/llibrary/inventors/blmatch.html>

[www.thematchboxman.pwp.blueyonder.co.uk](http://www.thematchboxman.pwp.blueyonder.co.uk)

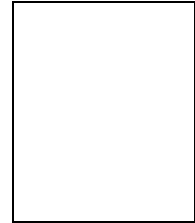
[www.matchcover.org/sierra/index.html](http://www.matchcover.org/sierra/index.html) Happy collecting and internet searching! □

Collectors interested in chess on stamps can join CSSU by contacting Ray Alexis at [chesstuff911459@aol.com](mailto:chesstuff911459@aol.com). They have a low annual subscription rates and publish a great quarterly entitled CHESSTAMP REVIEW, from which the above article was extracted. □



## CHESS AUCTIONS – 2007 calendar

**Bonhams** in England has announced that they will have chess sales in Knowle on February 27 and September 11, 2007. Both sales should be online as well as live. Additionally **Bloomsbury** in London will have its next chess sale in London on May 30, 2007. Luke Honey will be accepting consignments of chess items for the Bloomsbury auction until April 25, 2007. Bloomsbury has planned three chess auctions for 2007. Each one should be online as well as live. For more information members can contact Luke Honey at 44-20 7495 9494, or mobile 07900887054 or email to [luke@bloomsburyauctions.com](mailto:luke@bloomsburyauctions.com) □

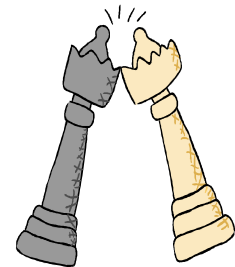


## CORRECTION

In the last issue of CCI-USA, we included an article reprinted from Antiques Roadshow Insider. In that article Bernice and Floyd Sarisohn were improperly called the "founders" of CCI. Although the Sarisohns were amongst the original charter members of CCI in 1984, the moving force and founders were our first CCI President, Dr. George Dean and his wife Vivian, assisted by Gert and David Hafler and Sonya and Ernst Boehlen. The first meeting of CCI was held in Florida in 1984. We will be returning to Florida for our next Biennial meeting in 2008. □

## WINE AND LIQUOR BOTTLES FOR CHESS SETS

Over the years many wine and liquor companies have made bottles or ceramic containers for their products, in the form of chess sets. Amongst the ones we know of are Old Crow, Garnier, Beneagles, Maggio, Vallo and Marie Brizard. Do you know of any others? Would you like to see pictures of these sets in a future issue of CCI-USA? If your response to either of these questions is YES, email your comments to [Lichess@aol.com](mailto:Lichess@aol.com), or send hard copy pictures to Floyd Sarisohn at PO Box 166, Commack, New York 11725. □



### *The so-called Charlemagne Chessmen* Le jeu dit "de Charlemagne"

Charlemagne never played Chess. However, these pieces were at the Saint Denis Abbey since the end of the 13<sup>th</sup> century. They are dated from the end of the 11<sup>th</sup> century and were probably manufactured in Salerne, near Napoli in South Italia. This is confirmed by their Normand military equipment, which can be related to the famous Tapisserie de Bayeux (also from the 11<sup>th</sup> c.).



The full set, Bibliothèque Nationale, Paris

These pieces are carved from elephant ivory. They could have been made for Robert Guiscard (dead 1085), tireless Normand warrior who dreamed of conquering an empire, or Pope Gregory VII ? The way they came to Paris is unknown, perhaps as a gift to French King Philippe II Auguste or Philippe III bringing back the body of Saint Louis his father, both Kings having stopped in Salerne.

In 1598, 30 pieces were inventoried. They were 16 in 1794 following the turmoil of the French Revolution : 2 Kings, 2 Queens, 4 Elephants, 4 Knights, 3 Chariots and 1 Foot Soldier. They are now at the Cabinet des Médailles, Bibliothèque Nationale, Paris.



*Kings*



*Queens*



*Elephants (Bishops)*



*Chariots*



*Knights*



*Soldiers*



*Ivory King Elephant which was once presented as belonging to the "Charlemagne set". It is known now that it comes from a different origin: India, IX or X century.*

*With its large size, 160x88 mm, it is not even sure that it is a chessman. As the matter of fact, several similar artifacts are known. They are more probably mere table decoration and not game piece at all.*

*(Thanks to Manfred Eder to have drawn this point to my attention)*

# CHARLEMAGNE CHESSMEN

for full featured article visit <http://history.chess.free.fr/charlemagne.htm>

The images and photographs shown on this page are coming from the following sources:

- "Pièces d'échecs", Bibliothèque Nationale, Cabinet des médailles et antiques, catalogue de l'exposition du 7 juin au 30 septembre 1990.
- Schach-Journal, 1/1994. (Edition Marco, Berlin)
- Web site from the BNF, Paris

The authors of these works, books and photographs, are kindly acknowledged.  
(Un grand merci aussi à Thierry Depaulis et à François Leysour de Rohello).

If there is any problem with their presence here, please do mail me.

See also: "Ist der ‚Elephanten-König‘ doch (k)ein ‚Schach-König‘?", Manfred A.J.Eder, Schach-Journal 1/1994.  
"Die ‚Charlemagne“-Schachfiguren erzählen eine völlig andere Geschichte", Juri Awerbach, Schach-Journal 1/1994.



More black & white photographs from the "Charlemagne set", Bibliothèque Nationale, Paris

□

## eOSEF is now available

**You can now display your collection on the Internet - No programming, No complex process to update, No wait. Do it yourself, in minutes, easily and update anytime you want to add or change content. All you need is a computer with access to the web and a browser to connect. A good digital camera will help with photos.**

**eOSEF will host your site, grant you a private web address of your choice and provide you with easy-to-use interface that enables you to edit site content and customize it to your likings.**

**Go to <http://www.eosef.com> to see how it works. When you enter, you will be presented with a gallery of various types of collections – select Chess to view all the chess collections currently hosted by eOSEF. Select the Demo site and enjoy. Hope you'll become a believer and join.**

**For details, send an email to Israel Raphaelli at [iraphaelli@eosef.com](mailto:iraphaelli@eosef.com) and you can get your site up and running in no time. □**

This may be your lucky day...

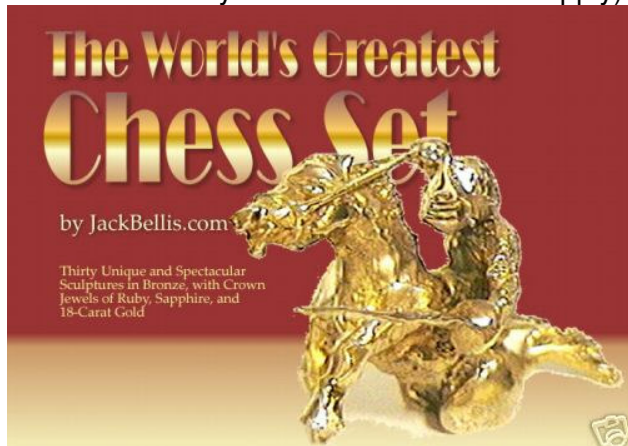
Currently for sale on eBay is a 186.98 CT handmade gold and diamond chess set labeled the **"ROYAL DIAMOND CHESS SET"** and described as "an extraordinarily luxurious version of a classic chess set. Designed by renowned French artist, designer, and master of jewellery, Bernard Maquin as part of the Gem Stone King collection" etc. It is offered at a starting price of US \$521,306.80

Chess Set



(approximately) but if you are in the market for a 187 CT chess set then this may not fit the bill. Above is an image as seen on eBay but for a full listing look for item number **140078981343**.

You can have the **"Naming Rights to World's Greatest Chess Set"**. Hurry and bid on item number **290077029155**. You may be able to get these rights for only US \$500,000.00 (and you don't have to make any payment for three months but you still need to apply).



Above is an image as seen on eBay. There is a long description about immortalizing your business's name and a reference to a very complex contract so you'll have to review it yourself. Perhaps Bill Gates can have it but, wait a minute, isn't he immortal already?

Last but not least, if your interest is American royalty, then you may be late but can still try for a "second chance" at the "one of a kind personal item owned by **JFK** as President of



the United States" We are told that this chess set was given to him as a birthday gift in 1962 (shadowed by Marilyn Monroe?) and it is "absolutely magnificent". This set is a real bargain, with a "buy it now" option for only US \$285,000.00 (no one did). Above is an image as seen on eBay and the expired listing can still be viewed, in its entirety, by going to eBay item number **190004771772**.

While at it, you can also get a "Queen Marie Antionette Medallion France Valentine's Day" 1774 original for under a **million** dollars (US \$999,999.99 to be exact.) Check item number **230082466308**. Stay tuned.

**Note:** Andy Rooney did **NOT** write this article.

**Another note:** In case you got the wrong impression, this is **NOT** a promotion for any of these sales and no; we are **NOT** getting any piece of the action.

**Yet another note:** Send us your interesting stories and anecdotes and we'll include them (or **NOT**) in future issues. ☐

## Unique Mammoth Ivory Chess Sets for Sale

Unique chess sets, made of Mammoth Ivory are created by CCI member Oleg Raikis from Russia. The sets are for sale and members who are interested in them can contact him at [olegra@mega.ru](mailto:olegra@mega.ru) or view more details on his website [www.raikiscollection.com](http://www.raikiscollection.com). Members should inform him that they are members of CCI, to get the best price available.







**OWN A GENUINE ORIGINAL WEDGWOOD (MADE in ENGLAND) JASPER PORCELAIN CHESS SET BY FLAXMAN**

**2006 ISSUE (MAXIMUM of 20 SETS PALE BLUE v WHITE PLUS A SMALL QUANTITY OF OTHER COLOURS ie: SAGE GREEN v LILAC, BLACK v WHITE and OTHER COLOURS TO SPECIAL ORDER)**

This fantastic chess set was 1<sup>st</sup> made in 1784 and then reproduced a small number of times since then. As a very keen collector of English Porcelain Chess Sets I have had, at enormous expense, the moulds refettled once again and can offer a small number of chess sets per year. (As long as the moulds last)

All the individual pieces are stamped WEDGWOOD MADE IN ENGLAND, YEAR 06 and INITIALS of MOULDER.

## OWN A PIECE OF ENGLISH HISTORY

As a fellow collector I am also prepared to take in old ceramic and porcelain, odd pieces or sets especially English, in Part Exchange for a New Wedgwood Set.

Anyone interested please contact myself. Tony Raynes for details

Tony Raynes. West House. Warren Drive, Hale Barns, Cheshire, England. WA15 0RP.  
Tel: 0161-980-8881, Fax: 0161-980-1972, email: [aeraynes@aol.com](mailto:aeraynes@aol.com)



# CLASSIFIED AD

Ads are free for CCI members and you are welcome to have an ad in more than one category. Ad rates for non-CCI members: full page \$120.00, half page \$60.00; quarter page \$30.00; business card \$15.00.



The Dinner Game

## Chess Art

*one-of-a-kind and limited edition*

*designs by Laura Sturtz*

*Twin Creek Studio*  
 PO Box 530  
 Manchaca, TX 78652  
 512-282-9480

*twinck@io.com*  
*www.io.com/twinck*



Sea Life Chess

Second-hand and Antiquarian Chess Books and Magazines for sale. I also buy books and collections. Clive Lane, Australia.  
 email: [clivelane@bigpond.com](mailto:clivelane@bigpond.com)  
 Web site: [www.fischerbooks.com](http://www.fischerbooks.com)

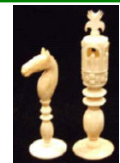
Chess Sets - Antique, Modern & Custom order.  
 Web site: <http://www.elizabethgann.com>

Antique Chess sets for sale  
 Web site: [www.geocities.com/dermot\\_rochford/](http://www.geocities.com/dermot_rochford/)

TONY PETERSON  
 Large stock of Out of Print Chess Books Online at:  
 Web site: [www.chessbooks.co.uk](http://www.chessbooks.co.uk)  
 Also Catalogues by Post or email:  
 email: [tony@chessbooks.co.uk](mailto:tony@chessbooks.co.uk)

Chess books for sale by collector (CCI member)  
 rare- new - scarce books. I buy and sell chess books  
 Mr. Kopet 1085 Tasman Dr. (space 343),  
 Sunnyvale, CA 94089  
 email: [kopet1085@aol.com](mailto:kopet1085@aol.com)

Israel & Remi Raphaelli  
**Pieces Wanted** - A small, early, ivory  
**white Knight** (2 1/8") ; **red King** (3")  
 email: [chess@ogdir.com](mailto:chess@ogdir.com)



### CCI-USA News Editors

Floyd Sarisohn  
 PO Box 166  
 Commack, NY 11725

Voice: 631.543.1330  
 Fax: 631.543.7901  
[lichess@aol.com](mailto:lichess@aol.com)

Israel Raphaelli  
 34 Cartwright Drive  
 Princeton Jct., NJ 08550

Voice: 609.275.1128  
 Fax: 609.275.0208  
[chess@ogdir.com](mailto:chess@ogdir.com)

### Editorial comments and policy...

The future and quality of this publication depends on your contributions. Send us your comment, notes, reports, articles, photos, stories etc. Thanks to all that contributed to this issue. Electronic form will help us bring it to print in a timely manner and reduced cost.

CCI-USA News was made possible thanks to volunteer work of all persons involved. We are not responsible for contents of articles, the performance of advertisers, the delivery or quality of their services or products, or the legality of any particular program or publication.